

# Station attendance

## Roma Termini

Analysis of the presences in the station through the processing of Vodafone Analytics (non-personal telephone Big Data, anonymized and aggregated in absolute compliance with the privacy requirements of the GDPR).

**Total**  
**7,1 millions**

**64,8%** Italians  
**35,2%** Foreigners

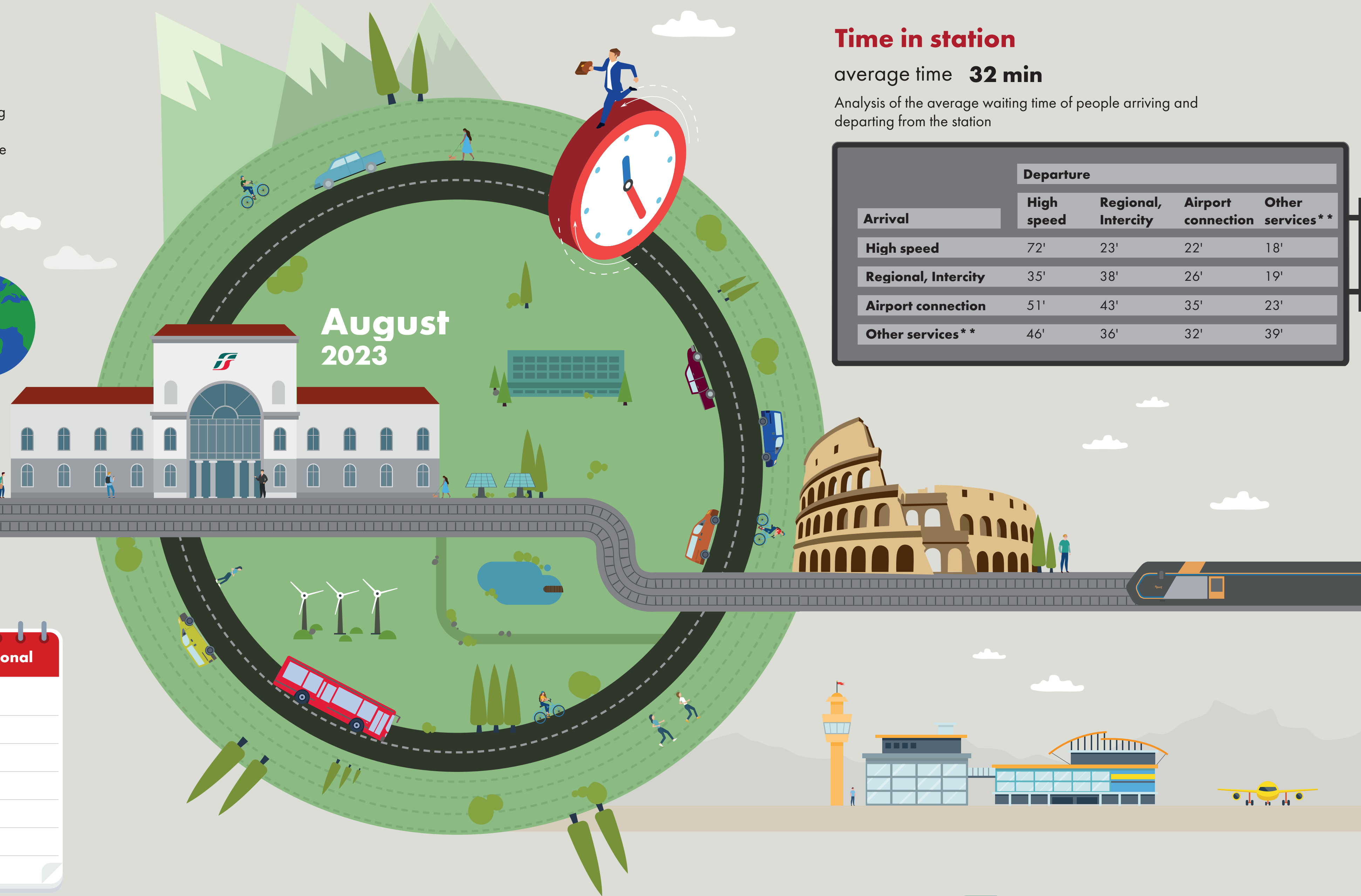
**1,8 millions**  
Number of visitors\*  
**5,3 millions**  
Passengers

## Types of travelers

**34%** commuters **66%** occasional

	Commuters	Occasional
monday	35%	65%
tuesday	36%	64%
wednesday	37%	63%
thursday	37%	63%
friday	36%	64%
saturday	27%	73%
sunday	24%	76%

\*Travelers present at the station who do not use train services.  
\*\*Arrival or departure from the station by private transportation, public services (except train) or on foot.  
Source: Vodafone for FS Research



# Time in station

average time **32 min**

Analysis of the average waiting time of people arriving and departing from the station

Arrival	Departure			
	High speed	Regional, Intercity	Airport connection	Other services**
High speed	72'	23'	22'	18'
Regional, Intercity	35'	38'	26'	19'
Airport connection	51'	43'	35'	23'
Other services**	46'	36'	32'	39'