

Station attendance

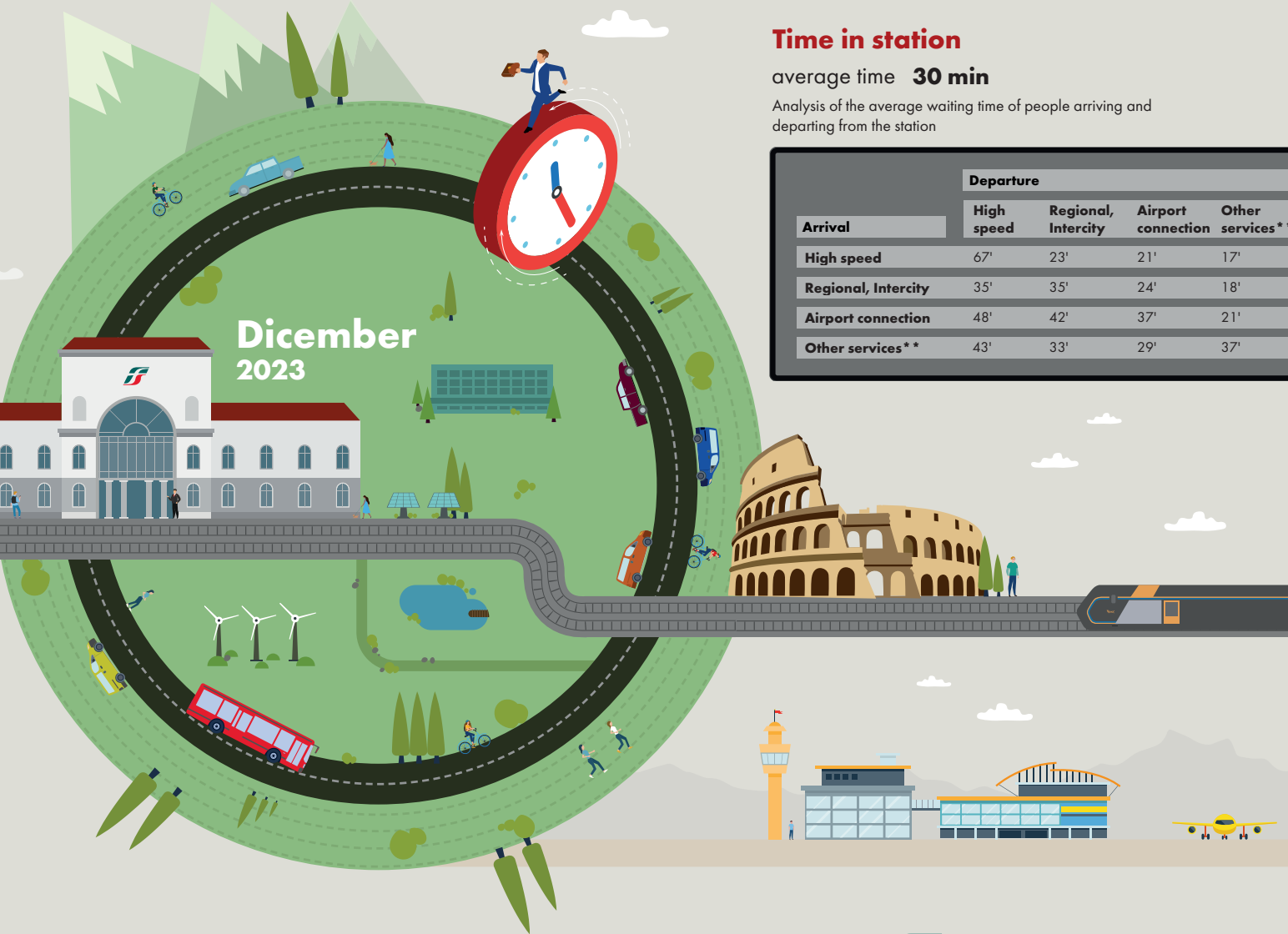
Roma Termini

Analysis of the presences in the station through the processing of Vodafone Analytics (non-personal telephone Big Data, anonymized and aggregated in absolute compliance with the privacy requirements of the GDPR).

Total
8,0 millions

81,4% Italians 18,6% Foreigners

2,0 millions Number of visitors*
6,0 millions Passengers



Time in station

average time **30 min**

Analysis of the average waiting time of people arriving and departing from the station

Arrival	Departure			
	High speed	Regional, Intercity	Airport connection	Other services**
High speed	67'	23'	21'	17'
Regional, Intercity	35'	35'	24'	18'
Airport connection	48'	42'	37'	21'
Other services**	43'	33'	29'	37'

Types of travelers

43% commuters 57% occasional

	Commuters	Occasional
monday	52%	48%
tuesday	50%	50%
wednesday	51%	49%
thursday	48%	52%
friday	40%	60%
saturday	31%	69%
sunday	27%	73%

*Travelers present at the station who do not use train services.
**Arrival or departure from the station by private transportation, public services (except train) or on foot.
Source: Vodafone for FS Research