

# Station attendance

## Roma Termini

Analysis of the presences in the station through the processing of Vodafone Analytics (non-personal telephone Big Data, anonymized and aggregated in absolute compliance with the privacy requirements of the GDPR).

**Total**  
**8,8 millions**

**80,1%** Italians  
**19,9%** Foreigners

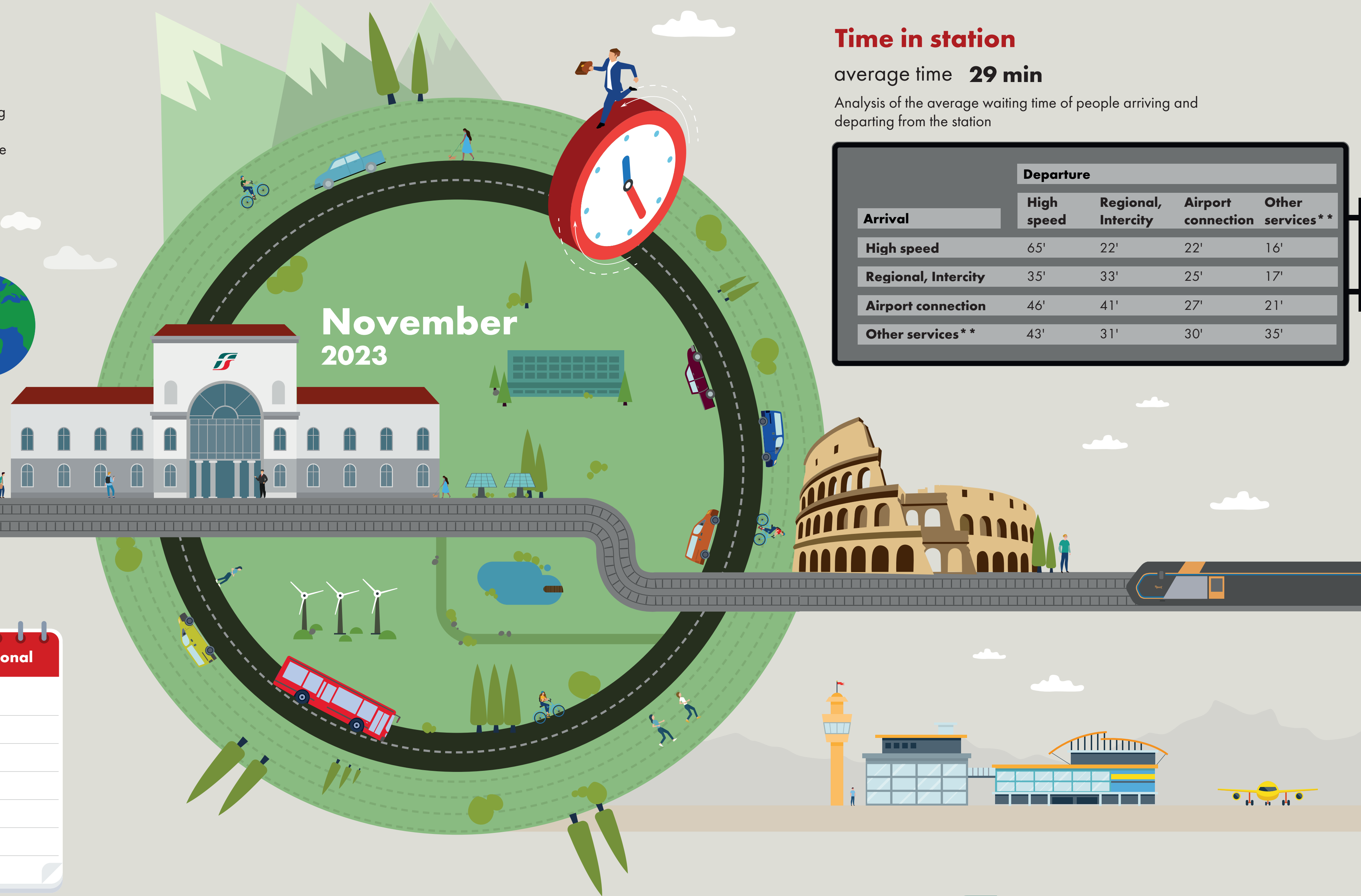
**2,2 millions**  
Number of visitors\*  
**6,6 millions**  
Passengers

## Types of travelers

**50%** commuters **50%** occasional

	Commuters	Occasional
monday	57%	43%
tuesday	59%	41%
wednesday	54%	46%
thursday	55%	45%
friday	50%	50%
saturday	34%	66%
sunday	29%	71%

\*Travelers present at the station who do not use train services.  
\*\*Arrival or departure from the station by private transportation, public services (except train) or on foot.  
Source: Vodafone for FS Research



**November**  
**2023**

# Time in station

average time **29 min**

Analysis of the average waiting time of people arriving and departing from the station

Arrival	Departure			
	High speed	Regional, Intercity	Airport connection	Other services**
High speed	65'	22'	22'	16'
Regional, Intercity	35'	33'	25'	17'
Airport connection	46'	41'	27'	21'
Other services**	43'	31'	30'	35'



**FS Research Centre**  
Il Centro Studi di Ferrovie dello Stato Italiane