

# Station attendance

## Napoli Centrale

Analysis of the presence of people in the station through the processing of Vodafone Analytics (non-personal telephone Big Data, anonymized and aggregated in absolute compliance with the privacy requirements of the GDPR).

**Total**  
**4,8 millions**

**75,3%** Italians  
**24,7%** Foreigners

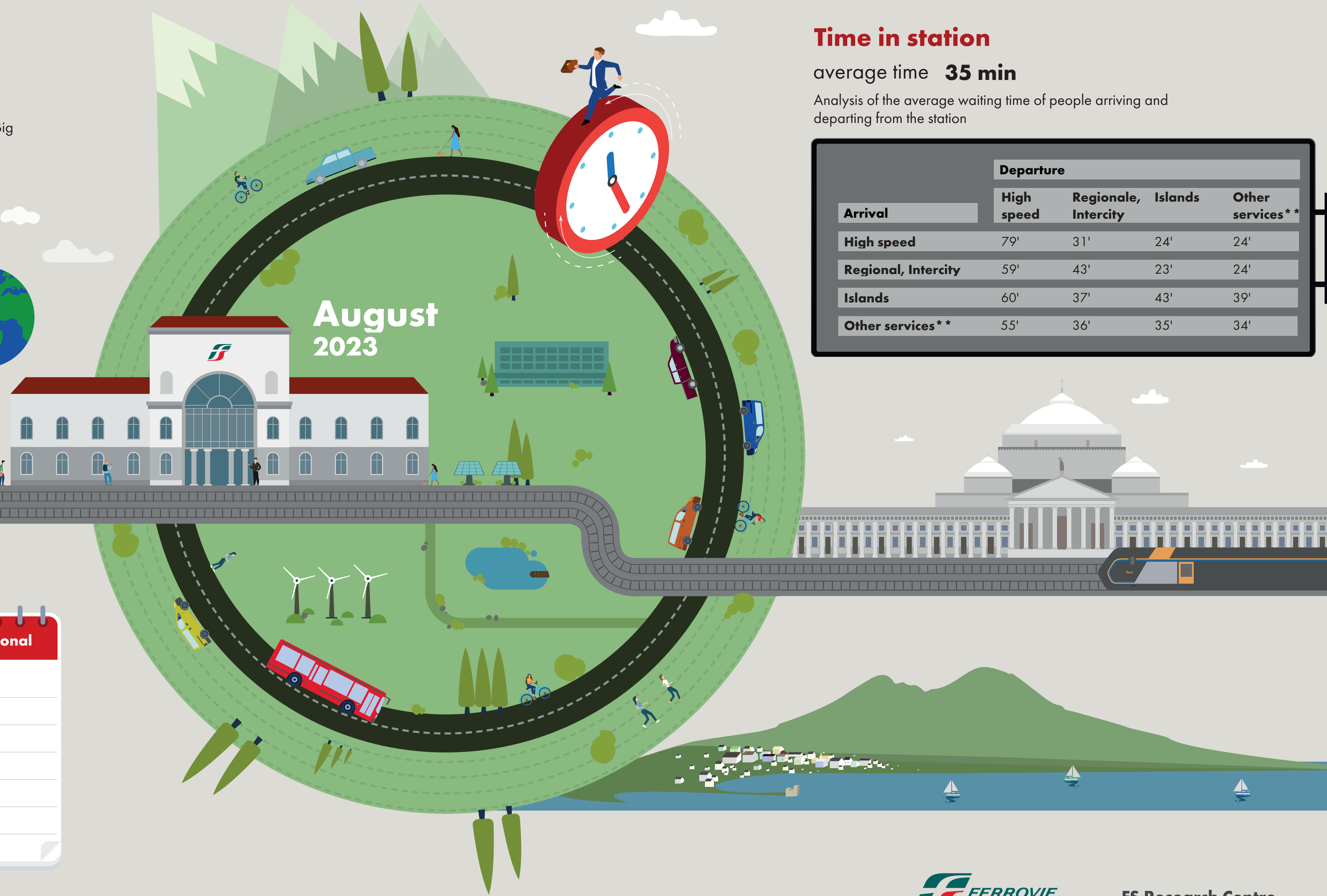
**0,3 milioni**  
Number of visitors\*  
**4,5 milioni**  
Passengers

## Types of travelers

**36%** commuters **64%** occasional

	Commuters	Occasional
monday	37%	63%
tuesday	38%	62%
wednesday	38%	62%
thursday	38%	62%
friday	37%	63%
saturday	32%	68%
sunday	31%	69%

\*Travelers present at the station who do not use train services.  
\*\*Arrival or departure from the station by private transportation, public services (except train) or on foot.  
Source: Vodafone for FS Research



# Time in station

average time **35 min**

Analysis of the average waiting time of people arriving and departing from the station

Arrival	Departure			
	High speed	Regionale, Intercity	Islands	Other services**
High speed	79'	31'	24'	24'
Regional, Intercity	59'	43'	23'	24'
Islands	60'	37'	43'	39'
Other services**	55'	36'	35'	34'