

Station attendance

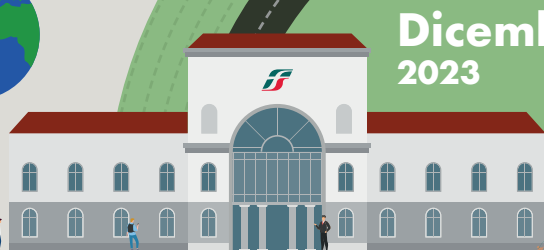
Napoli Centrale

Analysis of the presence of people in the station through the processing of Vodafone Analytics (non-personal telephone Big Data, anonymized and aggregated in absolute compliance with the privacy requirements of the GDPR).

Total
4,5 millions

92,9% Italians
7,1% Foreigners

0,4 millions
Number of visitors*
4,1 millions
Passengers



Dicember
2023

Types of travelers

46% commuters **54%** occasional

	Commuters	Occasional
monday	56%	44%
tuesday	53%	47%
wednesday	53%	47%
thursday	51%	49%
friday	45%	55%
saturday	36%	64%
sunday	35%	65%

*Travelers present at the station who do not use train services.

**Arrival or departure from the station by private transportation, public services (except train) or on foot.

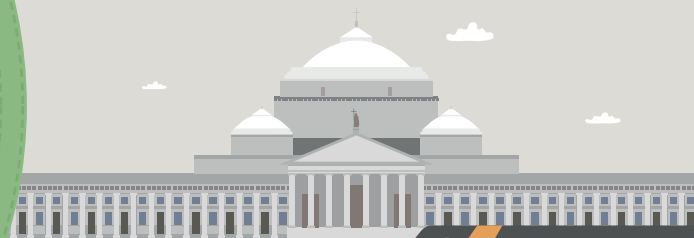
Source: Vodafone for FS Research

Time in station

average time **31 min**

Analysis of the average waiting time of people arriving and departing from the station

Arrival	Departure			
	High speed	Regionale, Intercity	Islands	Other services**
High speed	79'	25'	20'	22'
Regional, Intercity	53'	39'	22'	23'
Islands	58'	35'	42'	33'
Other services**	51'	35'	32'	29'



FS Research Centre
Il Centro Studi di Ferrovie dello Stato Italiano