

# Station attendance

## Napoli Centrale

Analysis of the presence of people in the station through the processing of Vodafone Analytics (non-personal telephone Big Data, anonymized and aggregated in absolute compliance with the privacy requirements of the GDPR).

**Total**  
**4,4 millions**

**91,1%** Italians  
**8,9%** Foreigners

**0,4 millions**  
Number of visitors\*  
**4,0 millions**  
Passengers

## Types of travelers

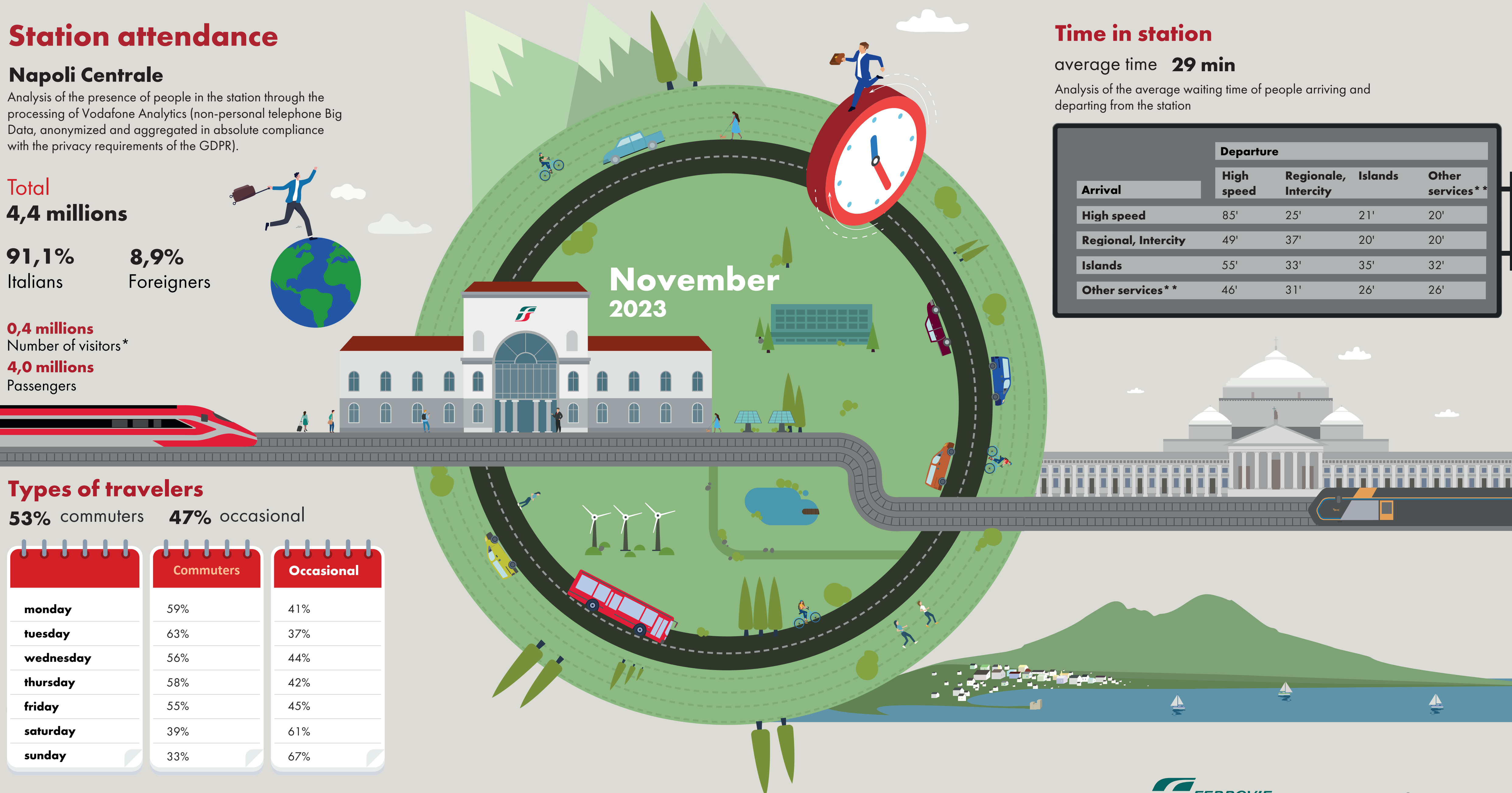
**53%** commuters **47%** occasional

	Commuters	Occasional
monday	59%	41%
tuesday	63%	37%
wednesday	56%	44%
thursday	58%	42%
friday	55%	45%
saturday	39%	61%
sunday	33%	67%

\*Travelers present at the station who do not use train services.

\*\*Arrival or departure from the station by private transportation, public services (except train) or on foot.

Source: Vodafone for FS Research



# Time in station

average time **29 min**

Analysis of the average waiting time of people arriving and departing from the station

Arrival	Departure			
	High speed	Regionale, Intercity	Islands	Other services**
High speed	85'	25'	21'	20'
Regional, Intercity	49'	37'	20'	20'
Islands	55'	33'	35'	32'
Other services**	46'	31'	26'	26'