

Station attendance

Milano Centrale

Analysis of the presence of people in the station through the processing of Vodafone Analytics (non-personal telephone Big Data, anonymized and aggregated in absolute compliance with the privacy requirements of the GDPR).

Totale
5,9 millions

80,5% Italians
19,5% Foreigners

0,9 millions Number of visitors*
5,0 millions Passengers

Types of travelers

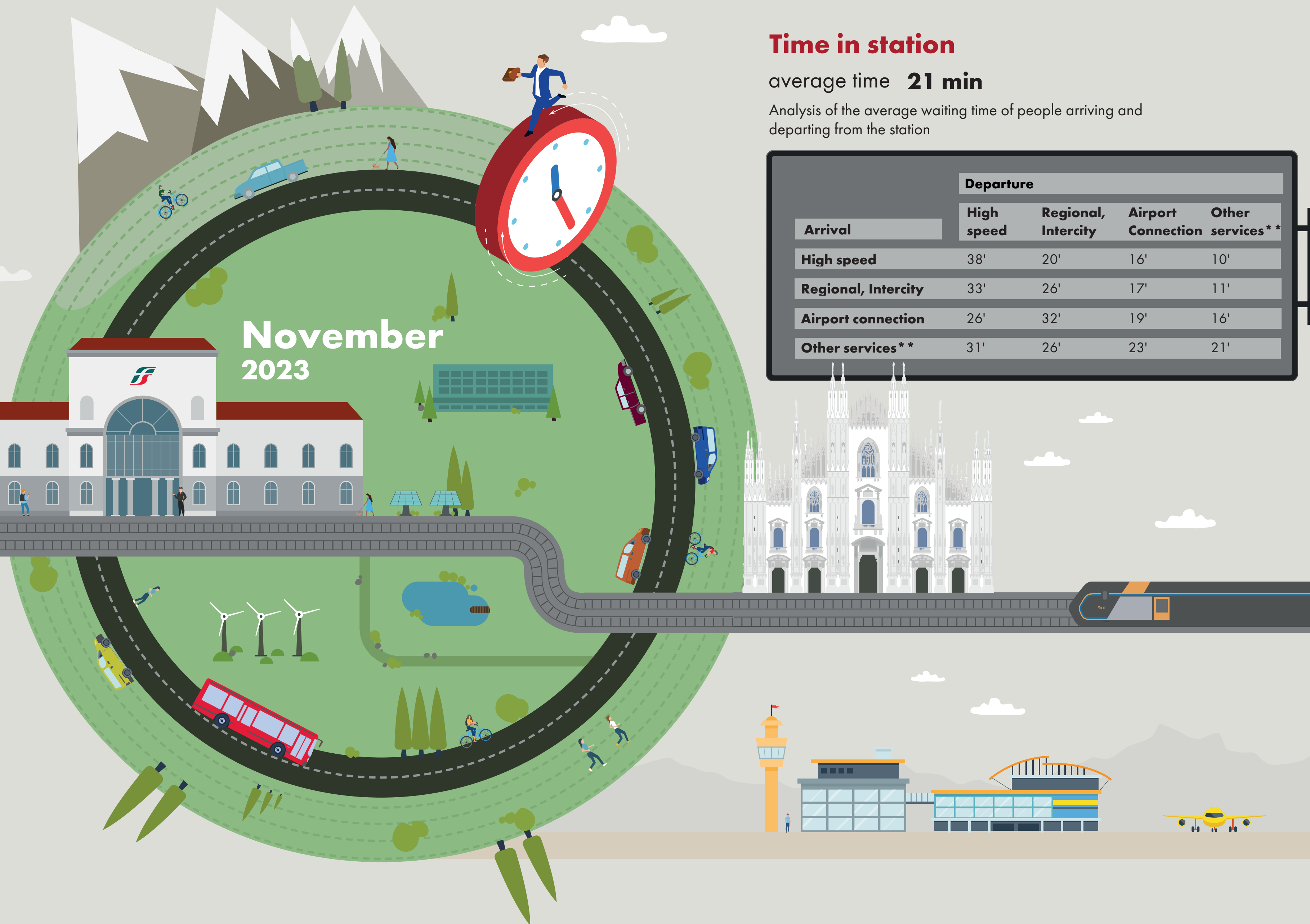
37% commuters **63%** occasional

	Commuters	Occasional
monday	43%	57%
tuesday	45%	55%
wednesday	40%	60%
thursday	42%	58%
friday	36%	64%
saturday	25%	75%
sunday	24%	76%

*Travelers present at the station who do not use train services.

**Arrival or departure from the station by private transportation, public services (except train) or on foot.

Source: Vodafone for FS Research



Time in station

average time **21 min**

Analysis of the average waiting time of people arriving and departing from the station

Arrival	Departure			
	High speed	Regional, Intercity	Airport Connection	Other services**
High speed	38'	20'	16'	10'
Regional, Intercity	33'	26'	17'	11'
Airport connection	26'	32'	19'	16'
Other services**	31'	26'	23'	21'