

# Station attendance

## Milano Centrale

Analysis of the presence of people in the station through the processing of Vodafone Analytics (non-personal telephone Big Data, anonymized and aggregated in absolute compliance with the privacy requirements of the GDPR).

**Totale**  
**6,7 millions**

**75,0%** Italians  
**25,0%** Foreigners

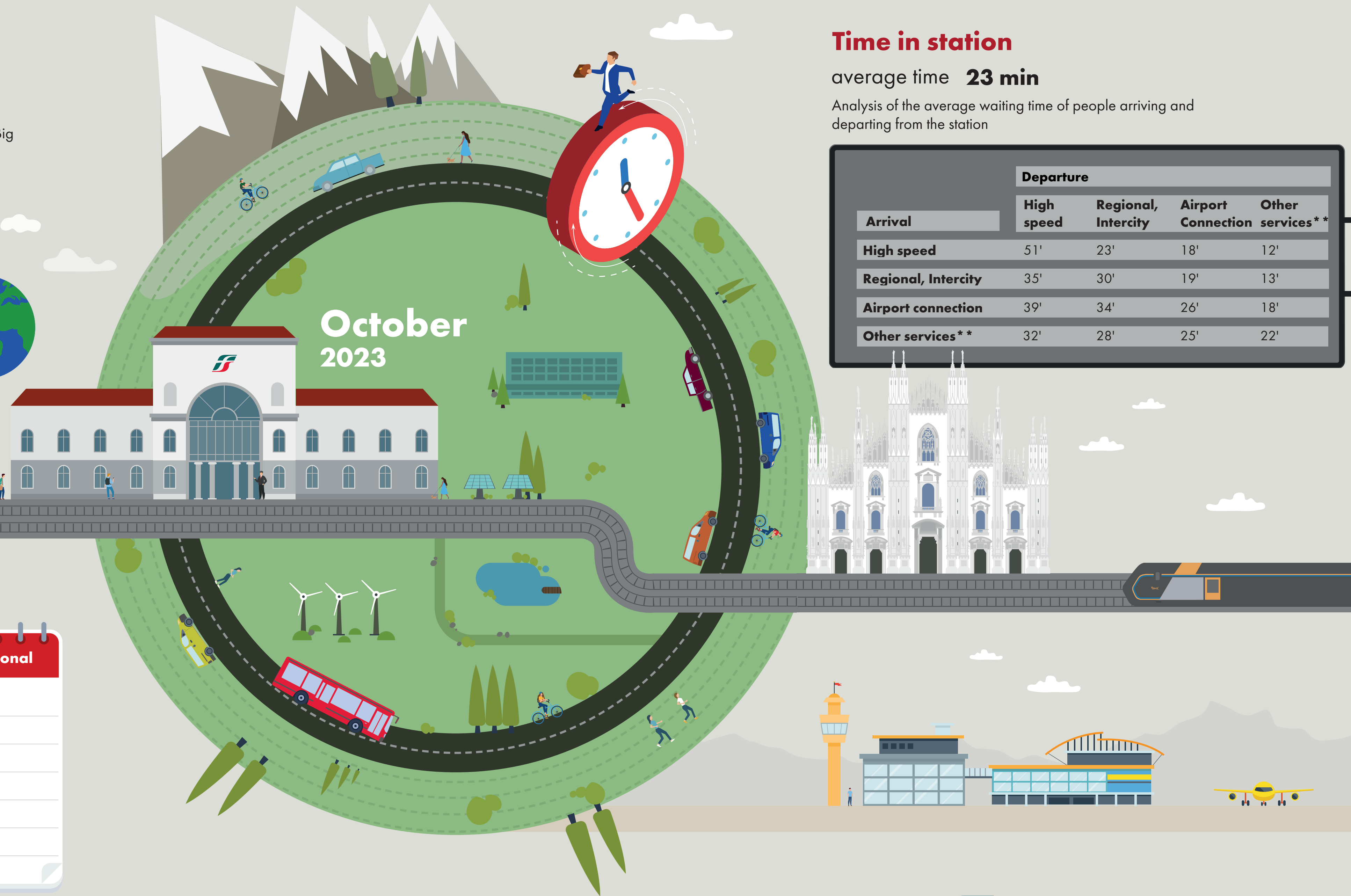
**1,0 millions**  
Number of visitors\*  
**5,7 millions**  
Passengers

## Types of travelers

**36%** commuters **64%** occasional

	Commuters	Occasional
monday	41%	59%
tuesday	42%	58%
wednesday	42%	58%
thursday	42%	58%
friday	37%	63%
saturday	24%	76%
sunday	24%	76%

\*Travelers present at the station who do not use train services.  
\*\*Arrival or departure from the station by private transportation, public services (except train) or on foot.  
Source: Vodafone for FS Research



# Time in station

average time **23 min**

Analysis of the average waiting time of people arriving and departing from the station

Arrival	Departure			
	High speed	Regional, Intercity	Airport Connection	Other services**
High speed	51'	23'	18'	12'
Regional, Intercity	35'	30'	19'	13'
Airport connection	39'	34'	26'	18'
Other services**	32'	28'	25'	22'