

Station attendance

Napoli Centrale

Analysis of the presence of people in the station through the processing of Vodafone Analytics (non-personal telephone Big Data, anonymized and aggregated in absolute compliance with the privacy requirements of the GDPR).

Total
4,1 millions

74,4% Italians
25,6% Foreigners

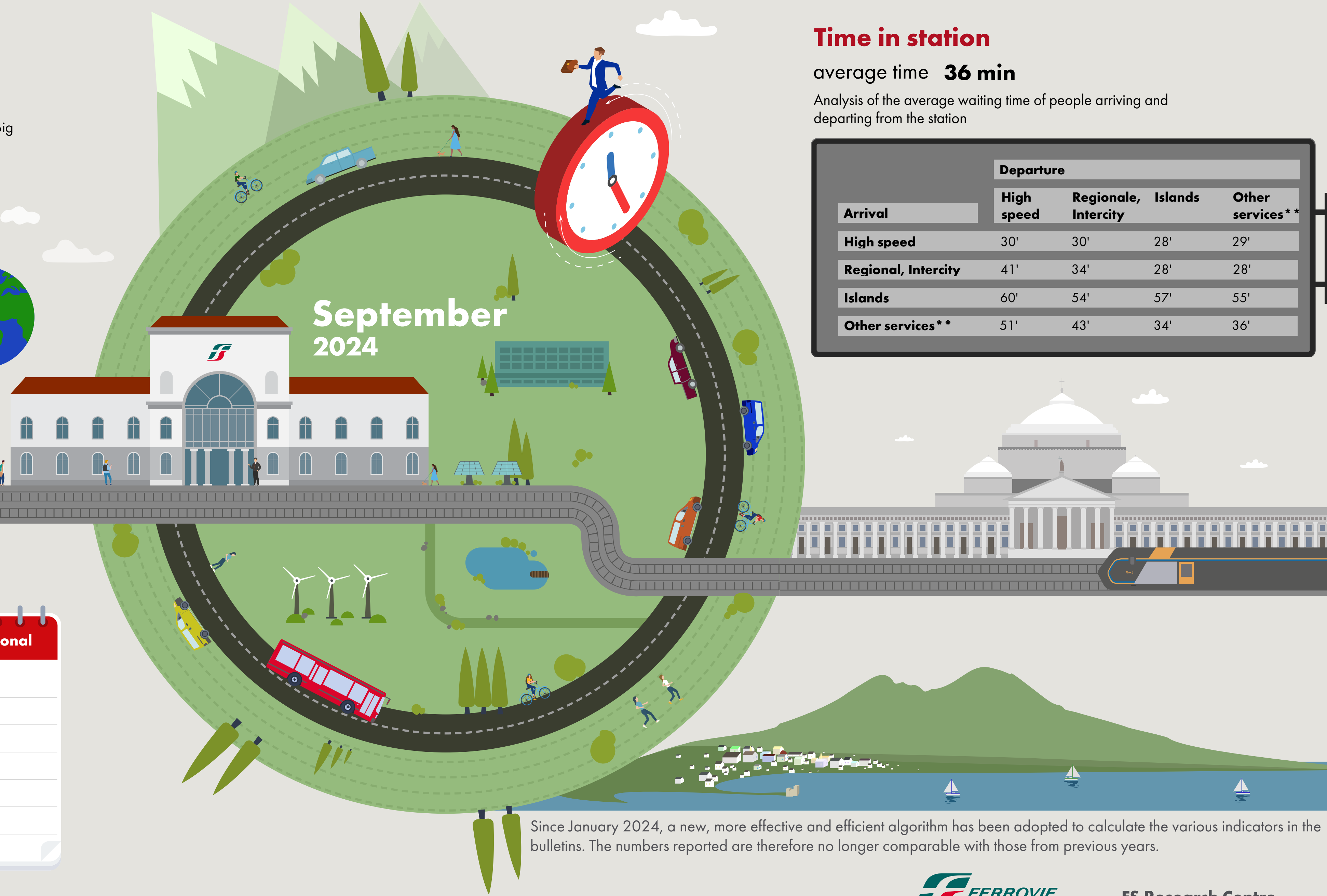
1,0 millions
Number of visitors*
3,1 millions
Passengers

Types of travelers

21% commuters **79%** occasional

	Commuters	Occasional
monday	26%	74%
tuesday	26%	74%
wednesday	26%	74%
thursday	24%	76%
friday	23%	77%
saturday	13%	87%
sunday	12%	88%

*Travelers present at the station who do not use train services.
**Arrival or departure from the station by private transportation, public services (except train) or on foot.
Source: Vodafone for FS Research



Time in station

average time **36 min**

Analysis of the average waiting time of people arriving and departing from the station

Arrival	Departure			
	High speed	Regionale, Intercity	Islands	Other services**
High speed	30'	30'	28'	29'
Regional, Intercity	41'	34'	28'	28'
Islands	60'	54'	57'	55'
Other services**	51'	43'	34'	36'

Since January 2024, a new, more effective and efficient algorithm has been adopted to calculate the various indicators in the bulletins. The numbers reported are therefore no longer comparable with those from previous years.