

# Station attendance

## Napoli Centrale

Analysis of the presence of people in the station through the processing of Vodafone Analytics (non-personal telephone Big Data, anonymized and aggregated in absolute compliance with the privacy requirements of the GDPR).

**Total**  
**4,3 millions**

**73,2%** Italians  
**26,8%** Foreigners

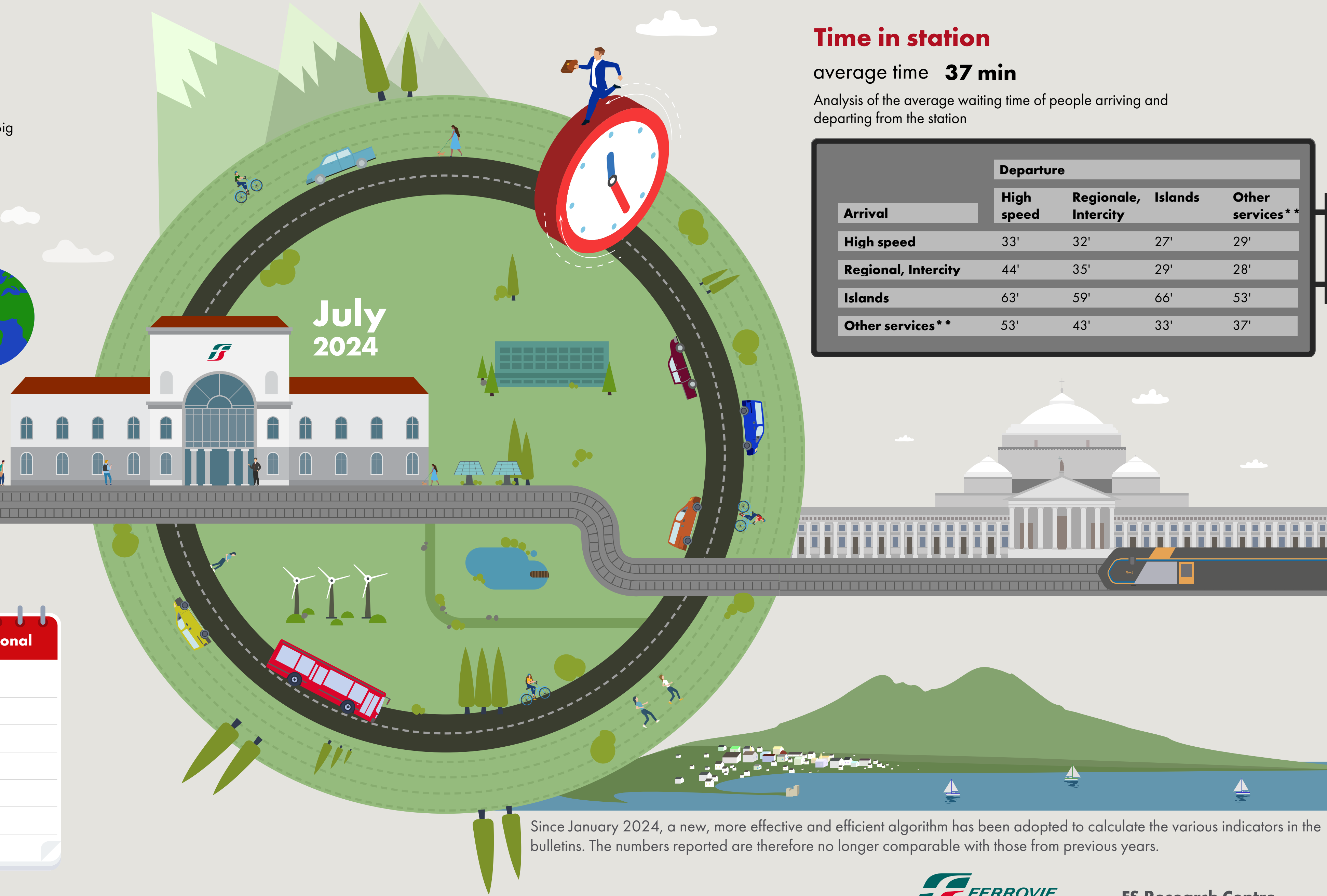
**0,9 millions**  
Number of visitors\*  
**3,4 millions**  
Passengers

## Types of travelers

**22%** commuters **78%** occasional

	Commuters	Occasional
monday	24%	76%
tuesday	26%	74%
wednesday	24%	76%
thursday	25%	75%
friday	23%	77%
saturday	14%	86%
sunday	12%	88%

\*Travelers present at the station who do not use train services.  
\*\*Arrival or departure from the station by private transportation, public services (except train) or on foot.  
Source: Vodafone for FS Research



# Time in station

average time **37 min**

Analysis of the average waiting time of people arriving and departing from the station

Arrival	Departure			
	High speed	Regionale, Intercity	Islands	Other services**
High speed	33'	32'	27'	29'
Regional, Intercity	44'	35'	29'	28'
Islands	63'	59'	66'	53'
Other services**	53'	43'	33'	37'

Since January 2024, a new, more effective and efficient algorithm has been adopted to calculate the various indicators in the bulletins. The numbers reported are therefore no longer comparable with those from previous years.