

Station attendance

Roma Termini

Analysis of the presences in the station through the processing of Vodafone Analytics (non-personal telephone Big Data, anonymized and aggregated in absolute compliance with the privacy requirements of the GDPR).

Total
7,9 millions

87,3% Italians
12,7% Foreigners

2,2 millions
Number of visitors*
5,7 millions
Passengers

Types of travelers

42% commuters **58%** occasional

	Commuters	Occasional
monday	46%	54%
tuesday	46%	54%
wednesday	48%	52%
thursday	48%	52%
friday	45%	55%
saturday	26%	76%
sunday	22%	78%

*Travelers present at the station who do not use train services.

**Arrival or departure from the station by private transportation, public services (except train) or on foot.

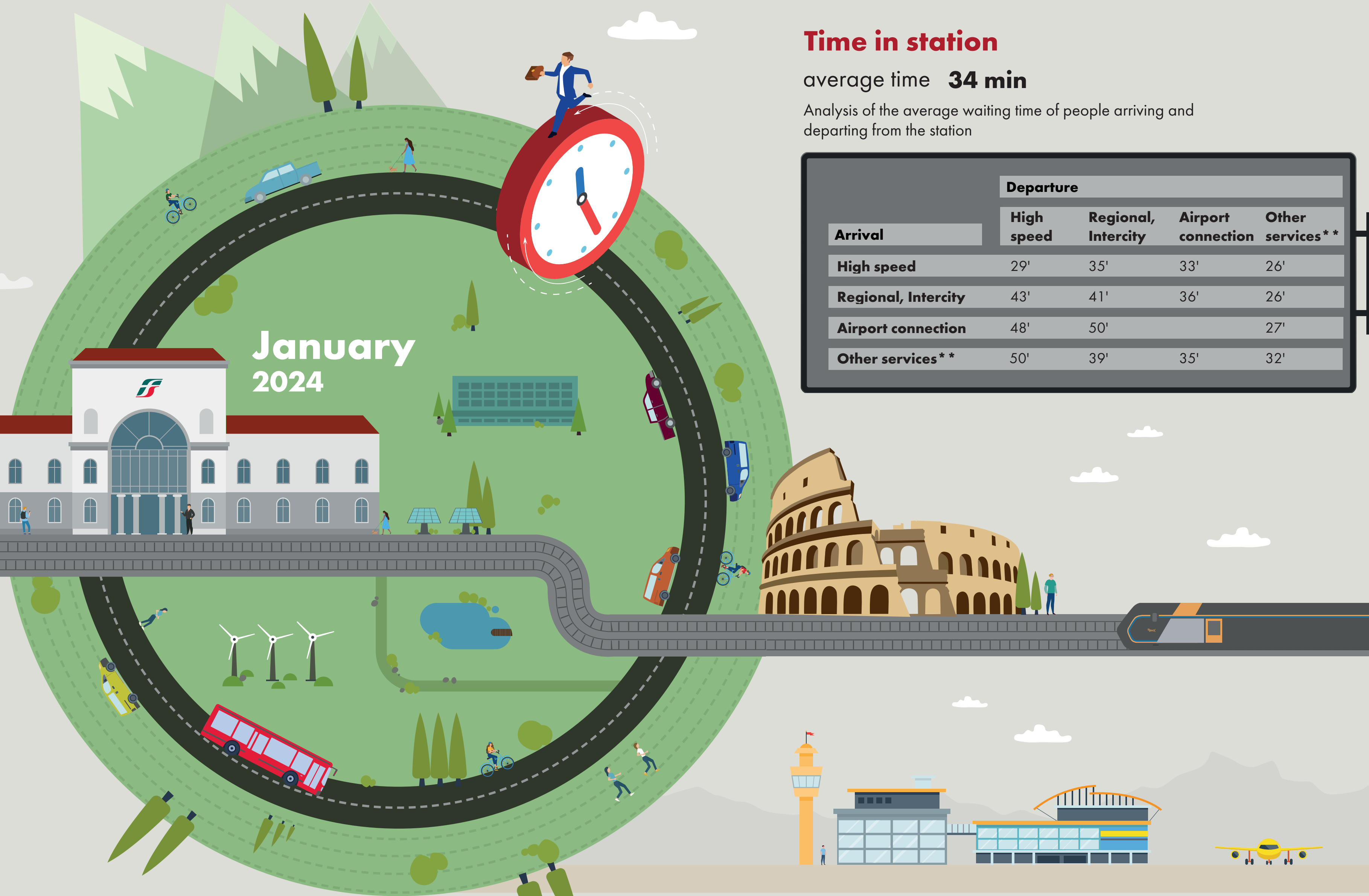
Source: Vodafone for FS Research

Time in station

average time **34 min**

Analysis of the average waiting time of people arriving and departing from the station

Arrival	Departure			
	High speed	Regional, Intercity	Airport connection	Other services**
High speed	29'	35'	33'	26'
Regional, Intercity	43'	41'	36'	26'
Airport connection	48'	50'		27'
Other services**	50'	39'	35'	32'



Since January 2024, a new, more effective and efficient algorithm has been adopted to calculate the various indicators in the bulletins. The numbers reported are therefore no longer comparable with those from previous years.