

Station attendance

Napoli Centrale

Analysis of the presence of people in the station through the processing of Vodafone Analytics (non-personal telephone Big Data, anonymized and aggregated in absolute compliance with the privacy requirements of the GDPR).

Total
3,4 millions

92,2% Italians
7,8% Foreigners

0,8 millions
Number of visitors*
2,6 millions
Passengers

Types of travelers

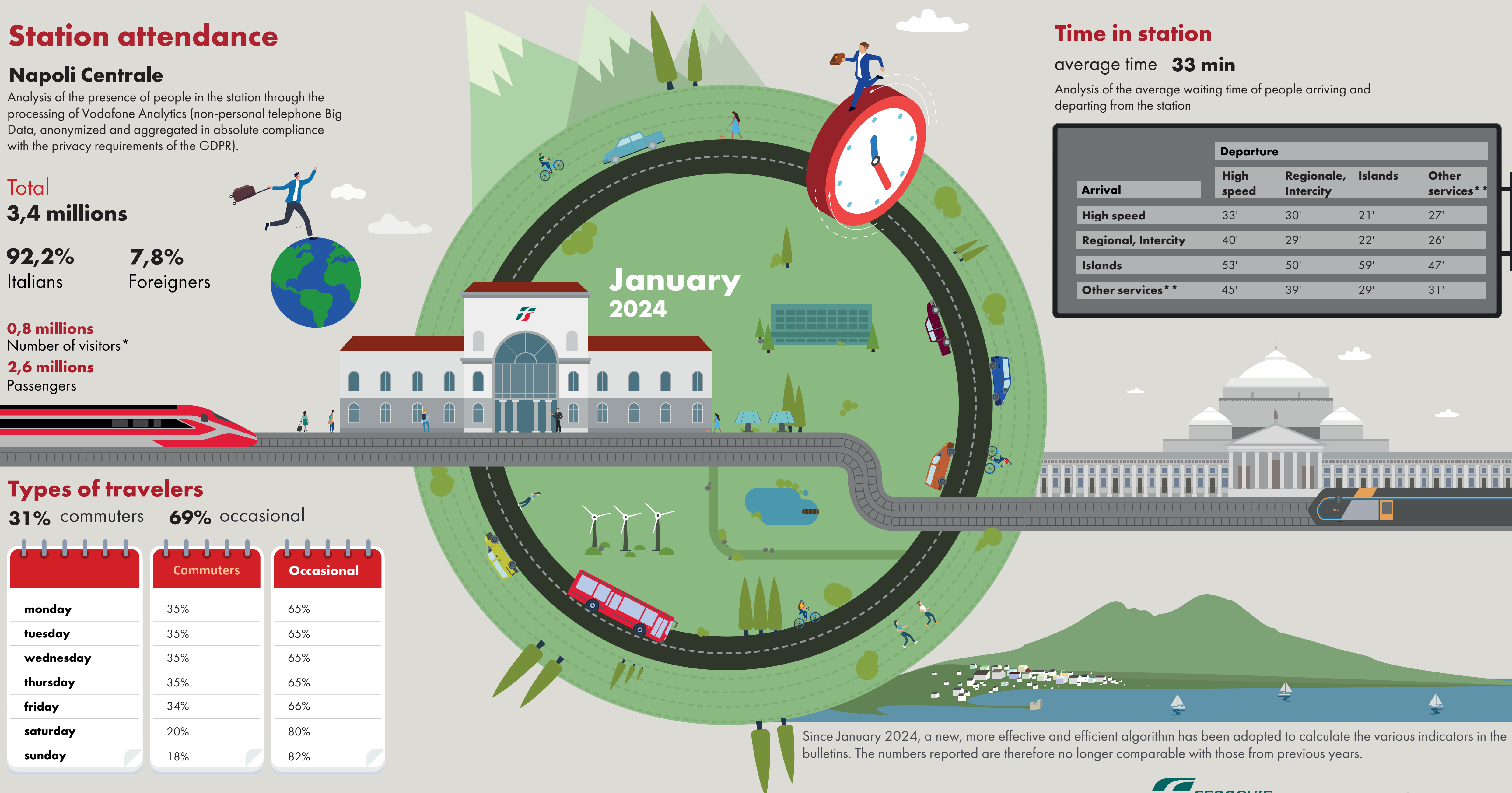
31% commuters **69%** occasional

	Commuters	Occasional
monday	35%	65%
tuesday	35%	65%
wednesday	35%	65%
thursday	35%	65%
friday	34%	66%
saturday	20%	80%
sunday	18%	82%

*Travelers present at the station who do not use train services.

**Arrival or departure from the station by private transportation, public services (except train) or on foot.

Source: Vodafone for FS Research



Time in station

average time **33 min**

Analysis of the average waiting time of people arriving and departing from the station

Arrival	Departure			
	High speed	Regionale, Intercity	Islands	Other services* **
High speed	33'	30'	21'	27'
Regional, Intercity	40'	29'	22'	26'
Islands	53'	50'	59'	47'
Other services* **	45'	39'	29'	31'

Since January 2024, a new, more effective and efficient algorithm has been adopted to calculate the various indicators in the bulletins. The numbers reported are therefore no longer comparable with those from previous years.