

Station attendance

Roma Termini

Analysis of the presences in the station through the processing of Vodafone Analytics (non-personal telephone Big Data, anonymized and aggregated in absolute compliance with the privacy requirements of the GDPR).

Total
9,4 millions

75,2% Italians
24,8% Foreigners

3,2 millions
Number of visitors*
6,2 millions
Passengers

Types of travelers

33% commuters **67%** occasional

	Commuters	Occasional
monday	38%	61%
tuesday	41%	59%
wednesday	40%	60%
thursday	39%	61%
friday	34%	66%
saturday	20%	80%
sunday	16%	84%

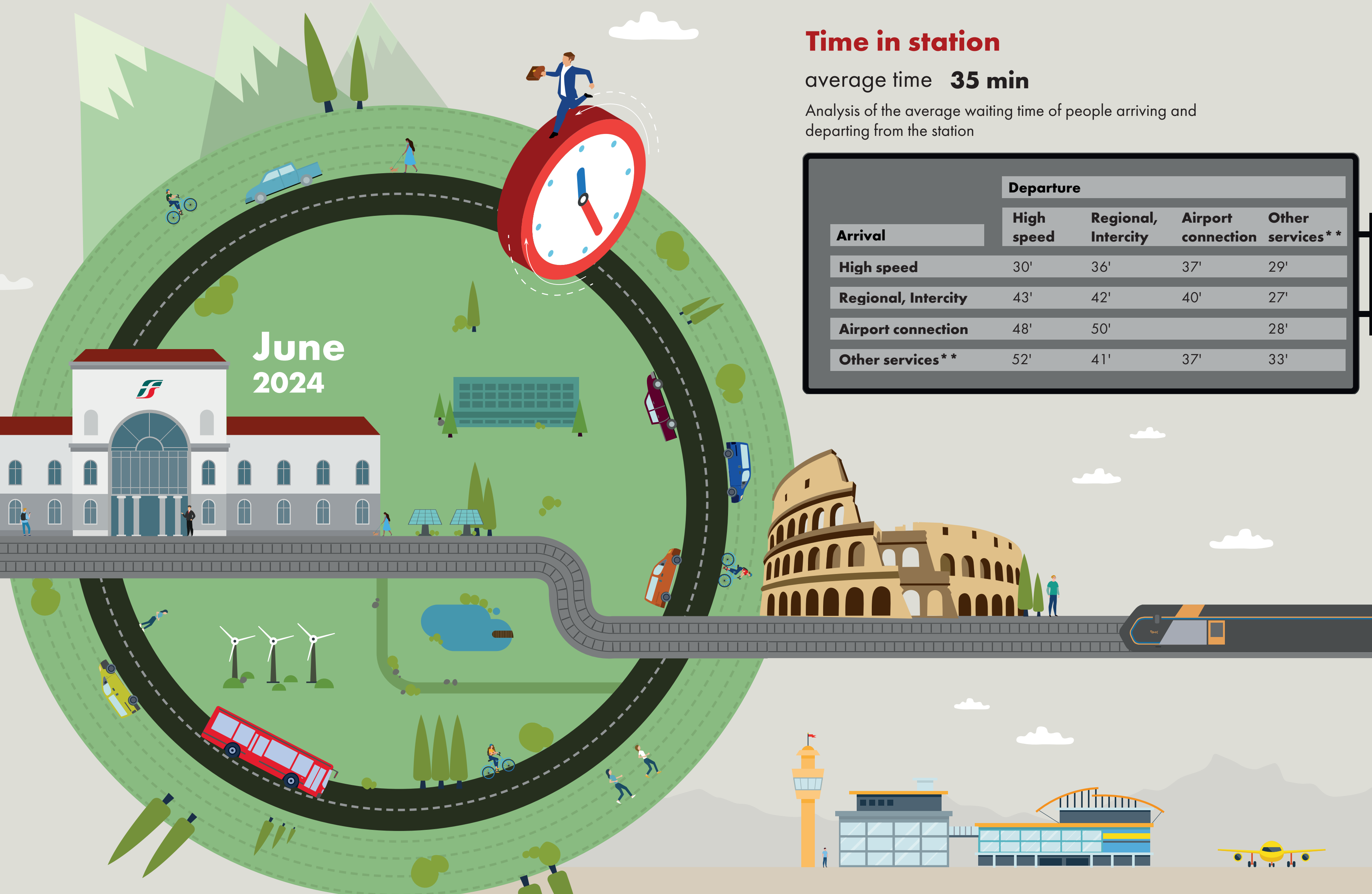
*Travelers present at the station who do not use train services.
**Arrival or departure from the station by private transportation, public services (except train) or on foot.
Source: Vodafone for FS Research

Time in station

average time **35 min**

Analysis of the average waiting time of people arriving and departing from the station

Arrival	Departure			
	High speed	Regional, Intercity	Airport connection	Other services**
High speed	30'	36'	37'	29'
Regional, Intercity	43'	42'	40'	27'
Airport connection	48'	50'		28'
Other services**	52'	41'	37'	33'



Since January 2024, a new, more effective and efficient algorithm has been adopted to calculate the various indicators in the bulletins. The numbers reported are therefore no longer comparable with those from previous years.