

Station attendance

Milano Centrale

Analysis of the presence of people in the station through the processing of Vodafone Analytics (non-personal telephone Big Data, anonymized and aggregated in absolute compliance with the privacy requirements of the GDPR).

Totale
6,7 millions

73,9% Italians
26,1% Foreigners

0,8 millions
Number of visitors*
5,9 millions
Passengers

Types of travelers

22% commuters **78%** occasional

	Commuters	Occasional
monday	26%	74%
tuesday	27%	73%
wednesday	26%	74%
thursday	26%	74%
friday	23%	77%
saturday	14%	86%
sunday	14%	86%

*Travelers present at the station who do not use train services.

**Arrival or departure from the station by private transportation, public services (except train) or on foot.

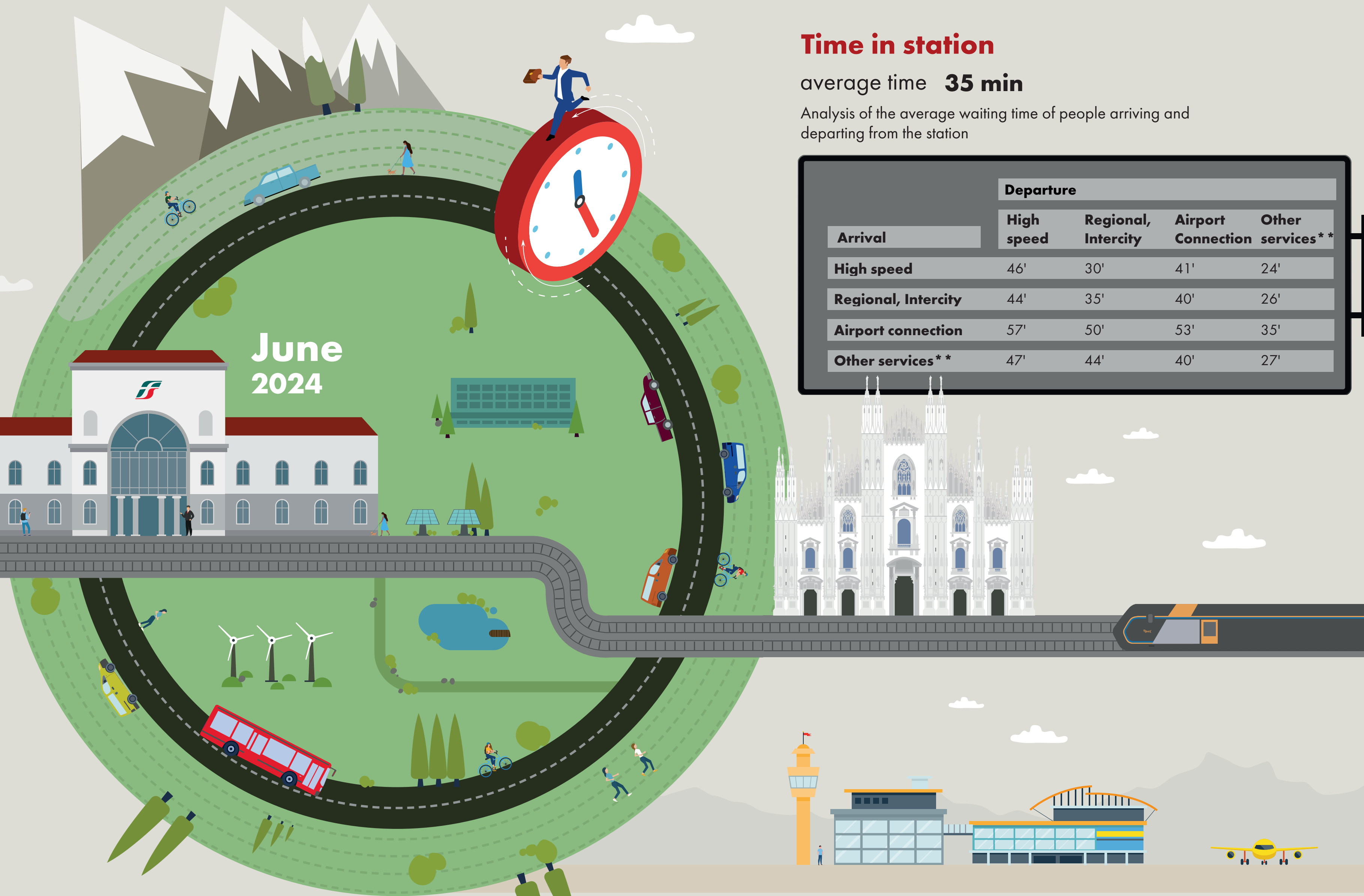
Source: Vodafone for FS Research

Time in station

average time **35 min**

Analysis of the average waiting time of people arriving and departing from the station

Arrival	Departure			
	High speed	Regional, Intercity	Airport Connection	Other services**
High speed	46'	30'	41'	24'
Regional, Intercity	44'	35'	40'	26'
Airport connection	57'	50'	53'	35'
Other services**	47'	44'	40'	27'



Since January 2024, a new, more effective and efficient algorithm has been adopted to calculate the various indicators in the bulletins. The numbers reported are therefore no longer comparable with those from previous years.