

Station attendance

Milano Centrale

Analysis of the presence of people in the station through the processing of Vodafone Analytics (non-personal telephone Big Data, anonymized and aggregated in absolute compliance with the privacy requirements of the GDPR).

Totale
6,5 millions

81,4% Italians
18,6% Foreigners

1,2 millions
Number of visitors*
5,3 millions
Passengers

Types of travelers

25% commuters **75%** occasional

	Commuters	Occasional
monday	32%	68%
tuesday	33%	67%
wednesday	33%	68%
thursday	29%	71%
friday	26%	74%
saturday	14%	86%
sunday	16%	84%

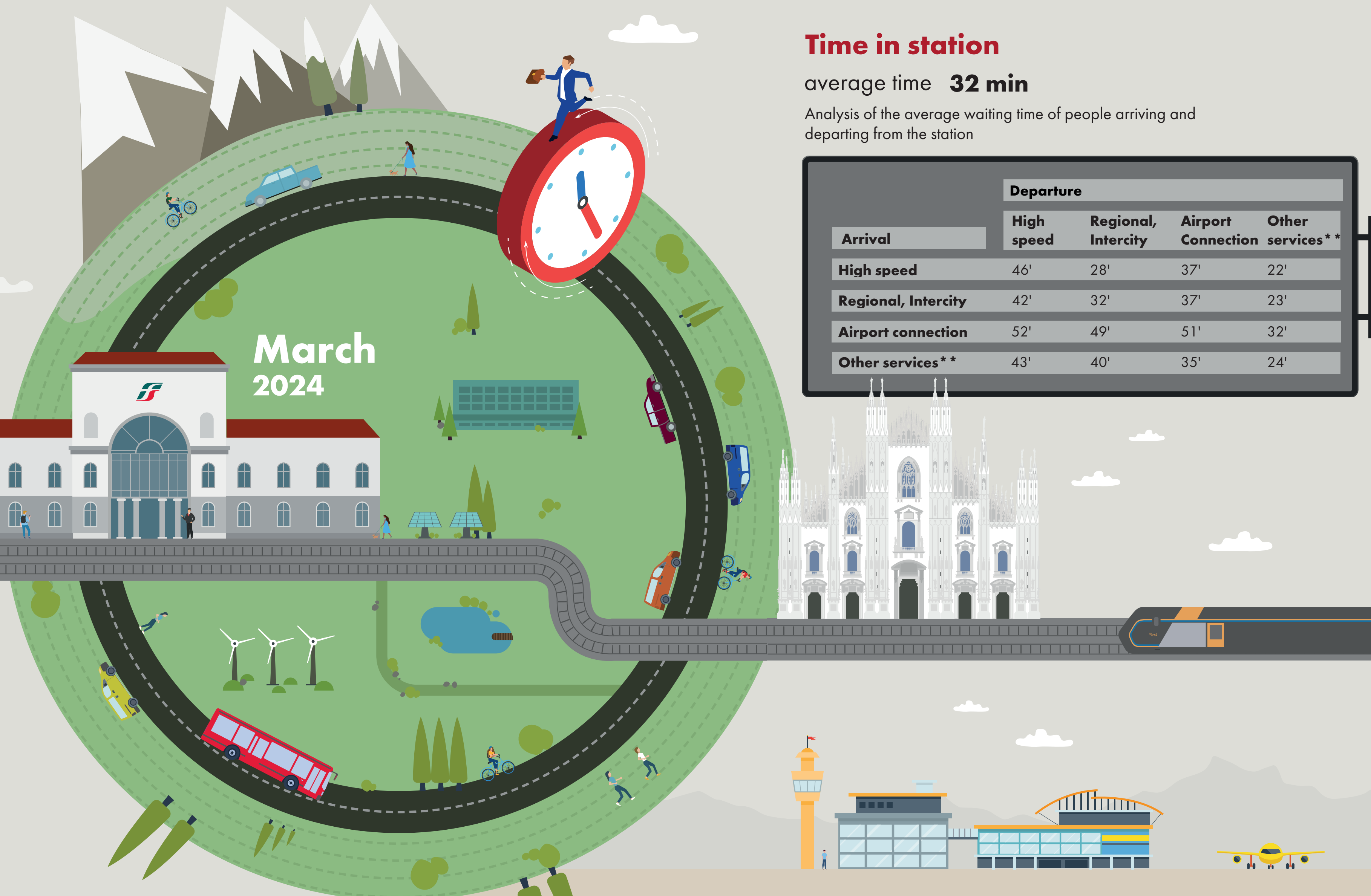
*Travelers present at the station who do not use train services.
**Arrival or departure from the station by private transportation, public services (except train) or on foot.
Source: Vodafone for FS Research

Time in station

average time **32 min**

Analysis of the average waiting time of people arriving and departing from the station

Arrival	Departure			
	High speed	Regional, Intercity	Airport Connection	Other services**
High speed	46'	28'	37'	22'
Regional, Intercity	42'	32'	37'	23'
Airport connection	52'	49'	51'	32'
Other services**	43'	40'	35'	24'



Since January 2024, a new, more effective and efficient algorithm has been adopted to calculate the various indicators in the bulletins. The numbers reported are therefore no longer comparable with those from previous years.